

# 5830 PVC OPENER INSTALLATION INSTRUCTIONS

1. BEFORE SETTING SKYLIGHT ON CURB.

- > CHECK FOR VISIBLE DAMAGE.
- > CHECK CURB FOR OBSTRUCTIONS.
- > MAKE SURE WORK AREA IS CLEAR.

2. SET SKYLIGHT ON CURB, BEING CAREFUL TO CENTER ON OPENING. TRY TO MAINTAIN EQUAL REVEAL ON ALL SIDES.

3. INSTALL #9 x 1 1/4" SCREWS W/SEALING WASHER HEADS PROVIDED, IN PRE-DRILLED HOLES IN THE SKIRT. NO FASTENERS AT THE HEAD. SEE SILL DETAIL FOR LOCATION OF FASTENERS IN SILL FRAME.

- > DO NOT OVER TIGHTEN.
- > CURB TAPE IS PROVIDED WITH SKYLIGHT AND THEREFORE NO SEALANT IS REQUIRED BETWEEN SKYLIGHT AND CURB.

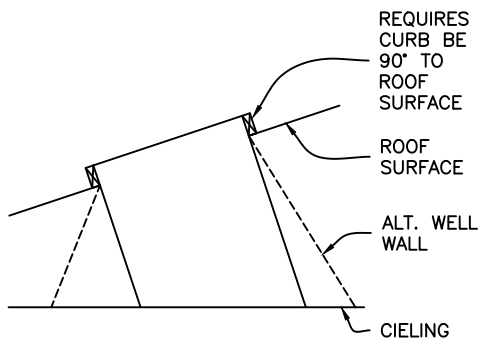
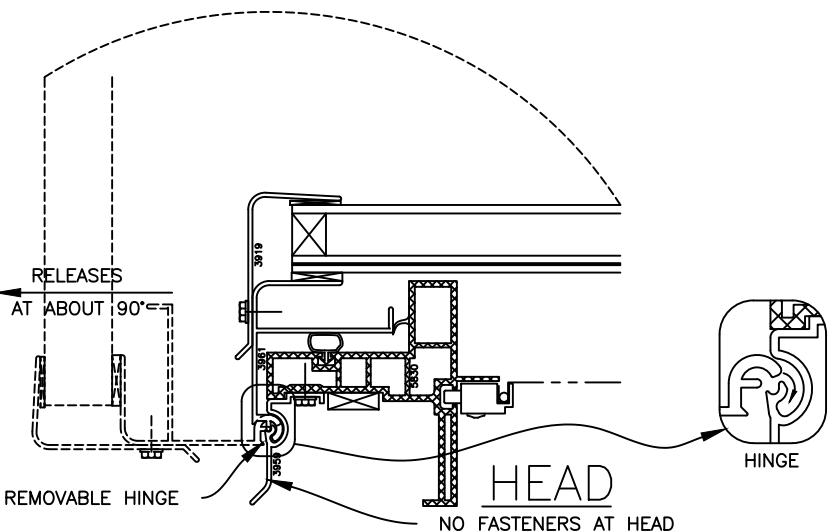
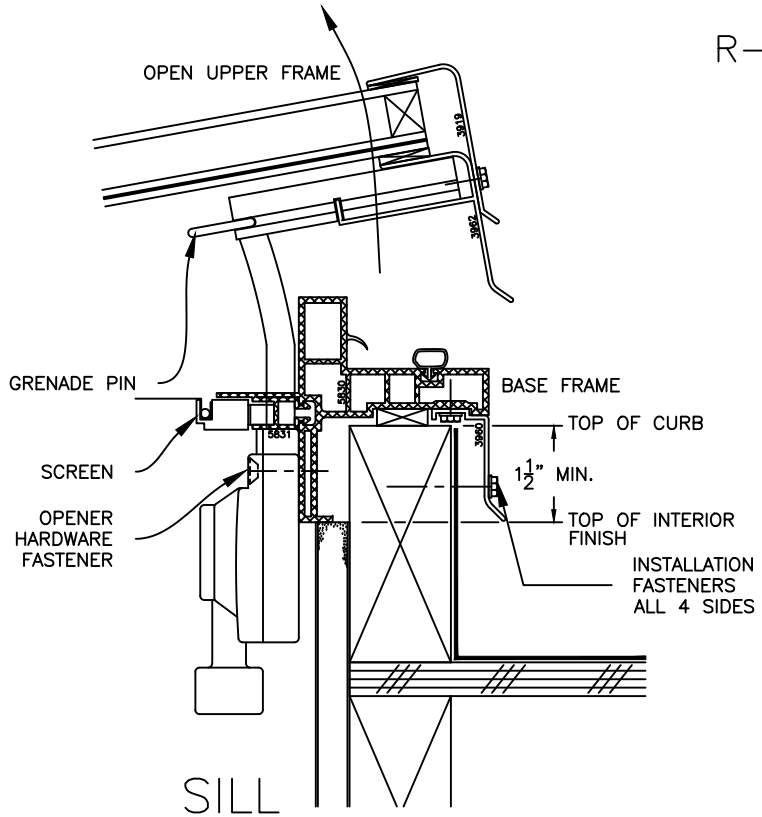
4. IF SKYLIGHT HARDWARE NEEDS TO BE REMOVED TO SHEET ROCK AND/OR FINISH SKYLIGHT WELL, REMOVE TWO #10 STAINLESS STEEL SCREWS AT THE UPPER OUTSIDE CORNERS OF THE OPENER HOUSING.

5. CYCLE OPEN AND CLOSED A COUPLE OF TIMES TO INSURE OPENER IS WORKING PROPERLY.

6. INSTALL SCREEN WITH SPRING CLIPS TOWARDS OPENER HARDWARE.

ENJOY YOUR NEW ENERGY EFFICIENT CRYSTALITE PVC OPENING SKYLIGHT, "THE CLEAR CHOICE".

ANY QUESTIONS - PLEASE CALL  
1-800-666-6065 OR IN EVERETT 259-6000



## IMPORTANT

DANGER: UNANCHORED SKYLIGHT CAN AND WILL BLOW OFF ROOF.

1. NEVER PLACE SKYLIGHT ON CURB WITHOUT FASTENING IT DOWN.
2. NEVER REMOVE GRENADE PIN OR OPENER HARDWARE WITHOUT TEMPORARILY ANCHORING UPPER FRAME DOWN.