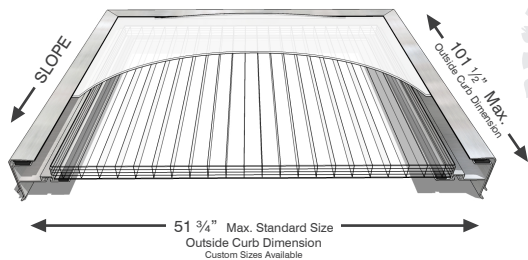


## DESIGNED SPECIFICALLY TO EXCEED THE STRICTEST ENERGY CODE REQUIREMENTS AND GREEN STANDARDS

**NEW revolutionary frame design maximizes glazing thermal performance and minimizes curb heat loss to provide unmatched NFRC Rated thermal properties without the need for expensive nanogel fill substrate.**

Featuring clear LEXAN 25mm multiwall sheet on interior is ideal for maintaining conditioned spaces, while the Optix white outer dome maximizes light capture and diffusion while reducing solar heat gain. Ideal for all climate zones.

The Series 5000 is also constructed without any of the 'red listed' materials often restricted by some green standards. Specifically, it is PVC-free.



### Aluminum Frame and Cap complies with the following:

- Aluminum extruded components shall be alloy 6063-T5 or 6063-T6, of sufficient thickness for this application, and as required per structural calculations; ASTM B 221.
- Mill finish per AMS-OQ-A-200/9 and MIL-DTL-25995.
- Welded corner construction; interior frame and external cap.

### Outer Dome complies with the following:

- ICC-ES listings as CC2 approved plastic complying with Section 2606.4 of the IBC
- ANSI Z97.1 Safety Glazing Requirements
- Underwriters Laboratories (UL) listings as UL 94HB & UL746 Compliant
- Miami-Dade County Product Notice of Acceptance-Plastics
- ASTM D-4802 B-1 Plastics

### Inner Polycarbonate MWS complies with the following:

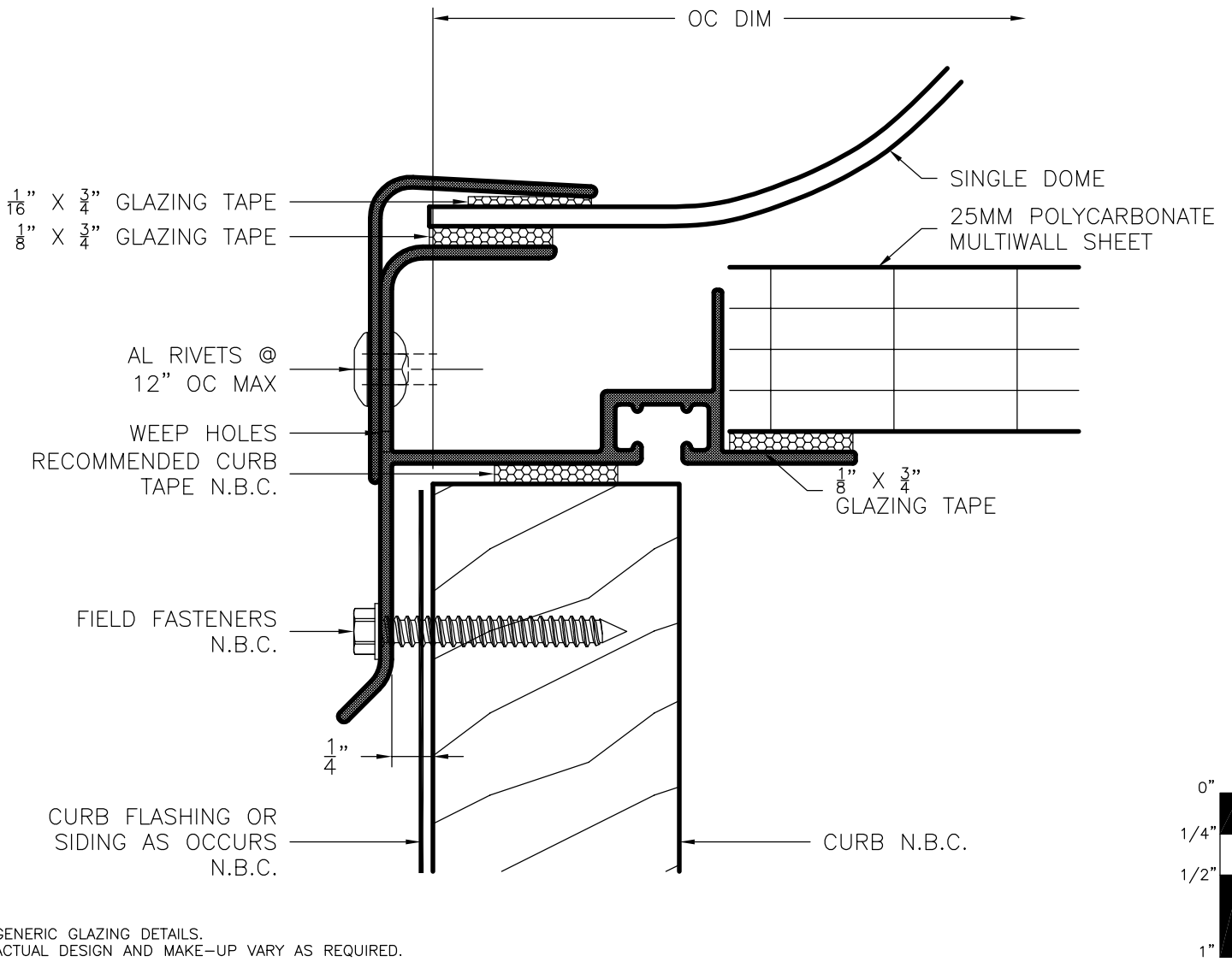
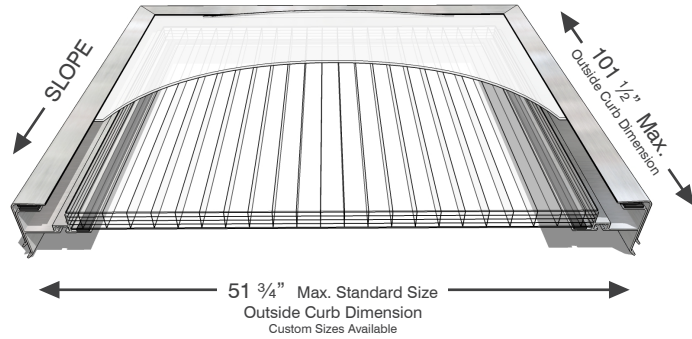
- Fire rating: Class A per ASTM E-84. Class CCI per ASTM D-635.
- Maximum Flame Spread/Smoke Development: 5/35
- Sound Transmission: STC 21
- Impact resistance, when tested in accordance with ASTM D 5420 (Drop Dart): >72 foot-pounds (271.16 N m) for 1/4-inch (6 mm) thick material.
- Weather resistance, when tested for 1500 hours in accordance with ASTM G 53 and QUV 313B:
- Coating integrity: Intact after testing period.

# SERIES 5000

Maximum standard sizes are limited by the availability of the polycarbonate multiwall sheets. Custom sizes available upon request.

Also note that the flutes of the polycarbonate multiwall sheet must run in the slope direction.

NFRC RATED VALUES	
U-FACTOR	SHGC
<b>0.44</b>	<b>0.29</b>
NFRC CPD: CRY-M-19-00001	



## Dome w/ MWS - 90° Curb

NAMI certified and NFRC rated for thermal performance.